



XP-6-EA EA-XP-6  
 XP-4-EA EA-XP-4  
 XP-5-EA EA-XP-5

**INSTRUCTIONS – QUICK START GUIDE**

*Exit Alert 900MHz Wireless Sensor Mats and 900MHz Wireless Receivers, together, form a convenient and reliable system for controlling dementia related wandering.*

**MATS AND RECEIVERS**

If you purchased EA-XP-6, EA-XP-4, or EA-XP-5, a WR-900-1 Receiver is included in those Systems.

If you purchased an XP-6-EA, XP-4-EA, or XP-5-EA Mat, you may have purchased either the WR-900-1 or the optional HUB-WR900-40 Receiver separately.

When Transmitter Mats and Receivers are ordered as a set, they are coded (programmed) to communicate with each other.

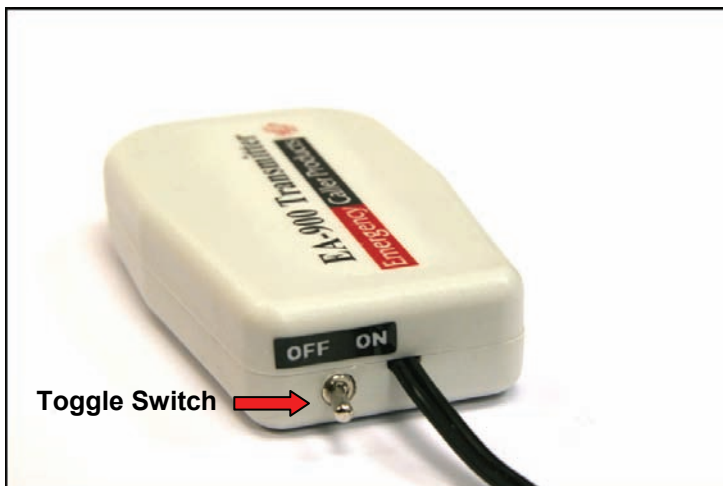
WR-900-1 will monitor up to 10 Mats, HUB-WR900R-40 can monitor up 40 Mats. WR-900-1 recognizes multiple Mats (locations) as a single zone. HUB-WR900R-40 recognizes multiple Mats individually and identifies their locations in a “data log” displayed on an LCD screen.

**INSTALLATION – SET UP**

Select a convenient location for the Receiver; five feet above the floor is recommended.

Follow the Receiver instructions, to arrive at the point where it is powered-up and in operating mode. The Receiver is now seeking the Transmitter Mat that it was programmed to electronically monitor.

With the Transmitter Mat lying flat and in proximity of the Receiver, move the Toggle Switch (located on the attached transmitter module) from OFF to ON position. See Fig. A.



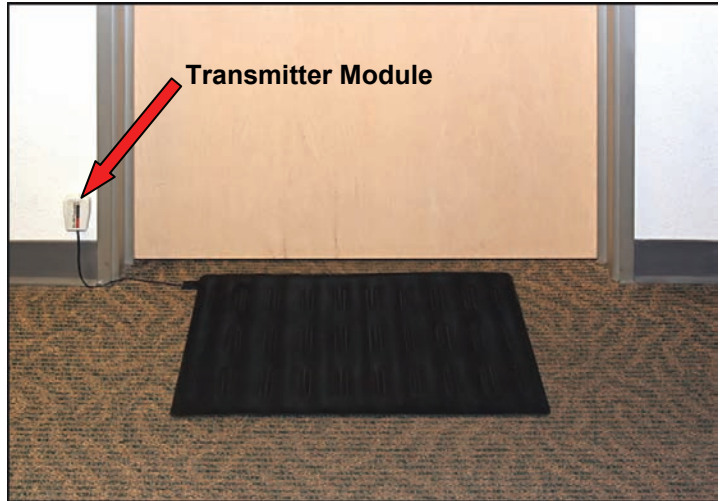
**Fig. A**

Wait 20 seconds, and while watching the Receiver, apply pressure (using your palm) to the center...

area of the Mat. The Receiver will respond according to the features of the particular model you are using. A Red flashing strobe light during alarm state is common to each of the two possible Receiver types.

Now that transmitter/receiver communication has been verified (test procedure) you are ready to install the Mat at the exit area you wish to monitor.

Place the Mat either inside or outside an exit door or window. Route the wires, and attach the Transmitter Module to the wall in any convenient location using the supplied Velcro Mounting Squares. See Fig. B



**Fig. B**

If necessary, the Mat can be secured to a floor surface with silicon seal or duct tape to prevent movement caused by foot traffic.

A thin floor mat or a throw rug will obscure the Transmitter Mat and cover the wires leading to the Transmitter Module.

After Receiver and Transmitter Mat installation is completed, test the system by having an assistant step on the Mat while you confirm alarm state at the Receiver.

**MONITORING**

When the Transmitter Module is in OFF position, it will not signal the Receiver. When the Transmitter Module is in ON position, and when the Mat is stepped on, it will signal the Receiver which in turn alerts the caregiver of a patient’s attempt to exit and wander.

Caregivers can enter and exit without tripping the alarm when the Transmitter Module is in the OFF position. Caregivers can exit in OFF position, and then reach back and turn ON the Transmitter Mat to start patient monitoring.

**ADVANCED MONITORING**

Exit Alert Systems have the unique feature of being portable and expandable. It can go with the patient and caregiver when traveling or on extended family visits, and monitoring capabilities can be...



expanded upon if Alzheimer's conditions change or advance.

The functional features of the two Exit Alert Receivers, along with the addition of more than one Transmitter Mat, are the key elements involved in expanding the monitoring capabilities of Exit Alert Systems.

Both WR-900-1 and HUB-WR900R-40 feature flashing strobes and audible (high/low) alarms. Both Receivers also feature Alarm outputs that can be connected to a nurse call station and/or an Auto Voice Dialer.

Auto Voice Dialers, available through Emergency Caller Products / USP Healthcare, dial designated cell or landline phone numbers and deliver a recorded message when triggered by either WR-900-1 or HUB-WR900-R-40.

Please consult with one of our Healthcare Monitoring Specialist for assistance in expanding your System's monitoring capabilities.

### BATTERY REPLACEMENT

The Transmitter Module is powered by one CR2450 3V Lithium Coin Cell Battery. In OFF position this Battery can last up to ten years.

Both Exit Alert Receivers will alert (strobe flash, audio tone, nurse call, and/or Auto Voice Dialer) when Transmitter Battery condition is low. Depending on the frequency and duration of monitoring sessions, this Battery may need to be replaced from time-to-time.

Replace the Battery by removing the four small phillips screws on the backside of the plastic housing. See Fig. C.

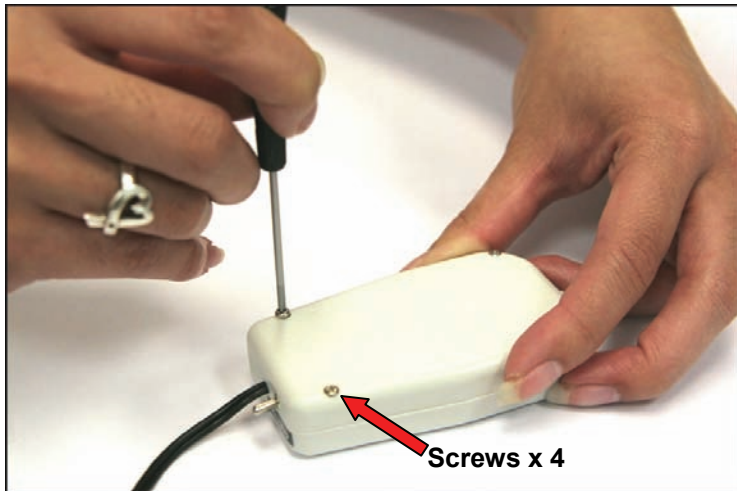


Fig. C

Separate the two-part housing, slide the old Battery out, and slide a fresh Battery in + up. See Fig. D.

After replacing the Battery, press the reset button (located next to the Battery) to reset the Transmitter Module to its most recent programming. See Fig. D.

Reassemble the two-part housing making sure that the rubber gasket is in place.

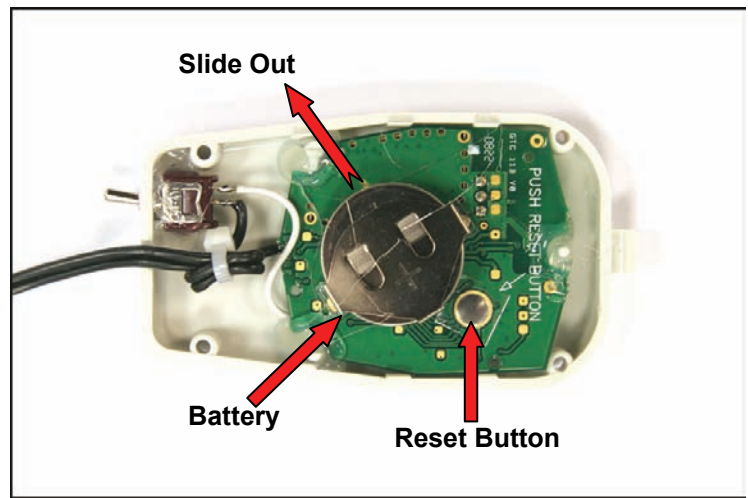


Fig. D

### TESTING

Even though Exit Alert monitors battery condition, the system must be checked before each monitoring session. Refer to "INSTALLATION – SET UP" for the quick and simple test procedure.

### RANGE

Range is the operational distance between the Transmitter Mat (or Mats) and the Receiver.

Exit Alert incorporates the most advanced 900MHz technology available, making it suitable for both homecare and facility monitoring.

Open field, or line-of sight Range, can be almost a mile. Building structure, obstructions between transmitter and receiver, and environment, can reduce Range.

In most homecare and healthcare facility in-building environments, Exit Alert Range will be 100 feet or better.

*Thank you for choosing...*



**HealthCare Security Products**  
**Emergency Caller Products**

**GETS  
HELP  
FAST!**

**United Security Products, Inc.**

(T) 800-227-1592  
(F) 858-413-0124

Email: [sales@unitedsecurity.com](mailto:sales@unitedsecurity.com)  
Web: [www.unitedsecurity.com](http://www.unitedsecurity.com)  
[www.emergencycaller.com](http://www.emergencycaller.com)

**40 Years of Superior American Manufacturing**  
Made in U.S.A

**U.S. and FOREIGN PATENTS PENDING**